

# LK Wall Box, single, double and Eco

## SCOPE

- For LK PE-X and PAL Universal pipes.  
[www.lksystems.se/en/products/universal/pipes/](http://www.lksystems.se/en/products/universal/pipes/)
- The LK PE-X Pipe-in-Pipe system, with component parts as stated in installation solutions NT VVS 129, is tested and approved in accordance with NT VVS 129 and the Sintef test method for protective conduits. Find out more at:  
[www.lksystems.se/en/dokumentation/technical-documentation/](http://www.lksystems.se/en/dokumentation/technical-documentation/)
- LK Systems recommends that the box is connected using PE-X pipes. Note that connection using LK PAL Universal pipes with dimensions 16 and 20, plus LK PE-X Universal pipes with dimension 20 do not fulfil BBR the requirements for concealed/inspectable joints without a service hatch.
- Pressure class PN 10.
- Thanks to its unique design, LK Wall Box UNI can be installed on a wall with at least 45 mm studs, screwed from the front on a nogging piece. To ensure the correct c/c distance between two boxes, a double wall box is available mounted on a rail.
- LK also has a wide range of connection couplings that can be fitted in the box.



LK Wall Box Single.

LK Wall Box Single Eco.



LK Wall Box Double.



LK Tappvattensystem är godkänt enligt Nordtestmetoden NT VVS 129.

## Penetrations walls with a waterproof membrane



### NOTE!

No pipe penetrations must be used in walls for baths or showers except for direct connection of bath or shower mixer taps and shower fittings.

- Wall boxes must be installed before the waterproofing membrane is fitted and be mounted at right angles to the mounting surface to prevent any movement between them and the membrane.
- For pipe penetrations in walls, the distance between the membrane on adjacent walls or floors and the box must be at least 60 mm and 100 mm from the ceiling.
- The distance between wall boxes for tap water or heating pipes must be at least 60 mm.



**Accepterad**  
monteringsanvisning  
2021:1


## TABLE OF CONTENTS

Scope	1
Design	2
Installation	2
LK ConnectionCouplings	6
Accessories for LK Wall Box UNI	6

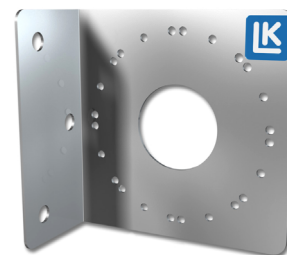
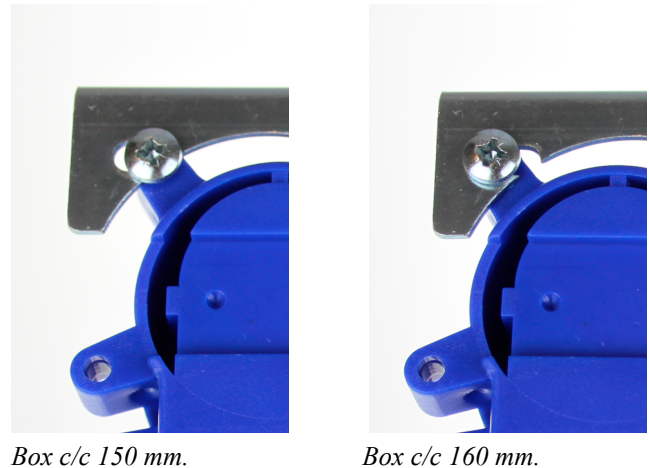
## DESIGN

<b>LK Wall Box UNI 16, Single</b>
RSK 187 43 84
For PE-X & PAL pipes: AX16 x G15 Clamp ring
Dy conduit: 25 mm
<b>LK Wall Box UNI 16, Double c/c 150-160</b>
RSK 187 43 88
For PE-X & PAL pipes: AX16 x G15 Clamp ring
Dy conduit: 25 mm
<b>LK Wall Box Press UNI 16, Single &amp; UNI Eco 16, Single</b>
RSK 187 71 92 and 188 24 04
For PE-X & PAL pipes: AX16 x G15 PressPex
Dy conduit: 25 mm
<b>LK Wall Box Press UNI 16, Double c/c 150-160</b>
RSK 187 71 93
For PE-X & PAL pipes: AX16 x G15 Clamp ring
Dy conduit: 25 mm
<b>LK Wall Box UNI 20, Single</b>
RSK 187 43 85
For PE-X & PAL pipes: AX20 x G15 Clamp ring ( <b>cannot be replaced</b> )
Dy conduit: 34 mm
<b>LK Wall Box UNI 20, Double c/c 150-160</b>
RSK 187 43 89
For PE-X & PAL pipes: AX20 x G15 Clamp ring ( <b>cannot be replaced</b> )
Dy conduit: 34 mm

## INSTALLATION




**NOTE!**  
LK Wall Box Double has c/c 150 mm. The boxes can easily be changed to c/c 160 mm by loosening the 4 screws and sliding both wall boxes sideways to their extended positions on the rail. When installing on site-cast concrete structures, LK Embedding Boxes are recommended.



LK Wall Box Plate - 1

1.
  - LK Wall Boxes can be installed in a 45 mm stud wall. LK Wall Boxes have multiple screw holes to ensure stable fastening.
  - If a LK Wall Box Double is used, it can also be fastened to an overlying noggling piece. The bracket can also be moved to the back of the wall boxes.
  - Using LK Wall Box Plate - 1 (RSK 187 73 99), a LK Wall Box Single can also be fastened to an overlying noggling piece or vertical stud.




**NOTE!**  
The distance between boxes on walls with a waterproof membrane for tap or heating pipes must be at least 60 mm.






LK Wall Box Plate - 1 fastened to a vertical stud.

2.
  - Split a LK Wall Box using a screwdriver according to the figure.

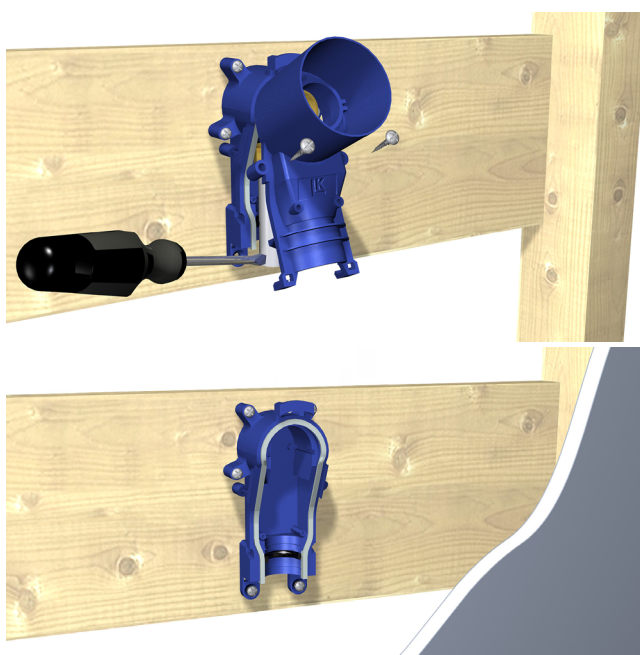


**NOTE!**  
If any of the snap fasteners break during assembly, the wall box must be replaced with a new one.

3.
  - The wall box must always be fastened on a nogging piece, stud or some type of wooden board.
  - Alternatively, LK Wall Box Plate - 1 (RSK 187 73 99) can be used.

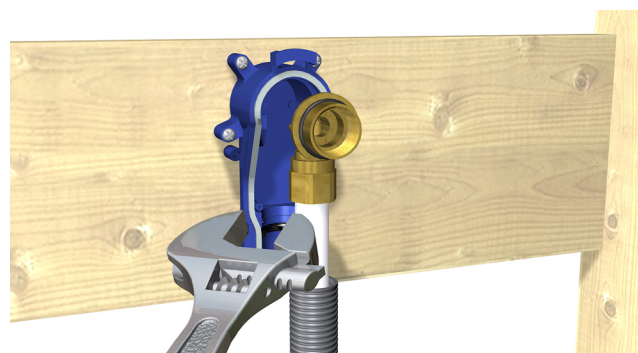


**OBS!**  
Never fasten a wall box on plasterboard.



#### Mounting an elbow coupling with a clamp ring

- 4.a
  - LK Universal Pipe is adjusted for length, the conduit is cut 30 mm shorter than the pipe.
  - The pipe must be graded/calibrated and elbow coupling mounted.
  - Tighten the nut by hand.
  - Tighten an additional 1½ turns with an adjustable spanner.

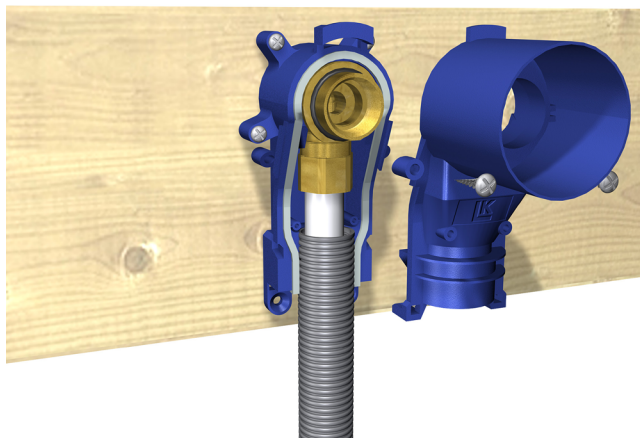


#### Mounting an angled coupling with PressPex connection

- 4.b
  - LK Universal Pipe is adjusted for length, the conduit is cut 30 mm shorter than the pipe.
  - The pipe must be graded/calibrated and the PressPex connection elbow fitted.
  - Follow the installation instructions for LK PressPex and Press-Pex ECO.
5.
  - Pressure and tightness check must be carried out in accordance with "Installation instructions for LK PEX, PAL and PE-RT pipes".



- 6.
- The conduit is mounted in the two lock grooves and against the seal in the wall box together with the coupling.
  - Then snap on the front of the box.



- 7.
- If you are unable to snap on the front of the box manually, press carefully into place with a pair of adjustable pliers.



**NOTE!**

If any of the fasteners break during assembly, the wall box must be replaced with a new one.



- 8.
- Screw the two screws included into the front part of the wall box.
  - Screw in the blue plastic insert. Use **LK Assembly Tool Wall Box Uni/Grip V2** (RSK 188 26 95).



- 9.
- If using a LK Wall Box for 20 mm pipe, use the enclosed conduit piece and the two O-rings according to the Figure.



- 10.
- If connection to the box is via LK PAL Universal Pipe dimensions 16 and 20 or LK PE-X Universal Pipe dimension 20, the double box must be mounted under a stud with the mounting rail screwed upwards into the stud from below.
  - The same applies to single boxes, but here the LK Wall Box mount must be used. (RSK 187 73 99). A service hatch must be mounted behind the box for removal of the box if required.



**NOTE!**

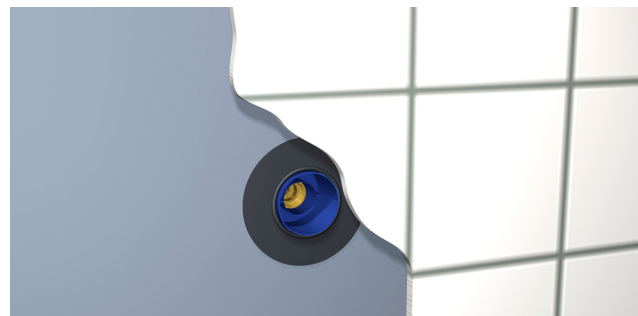
Note that LK PAL Universal Pipe dimensions 16 and 20, and LK PE-X Universal Pipe dimension 20 are not replaceable. This implies that a service hatch must be installed.



- 11.
- If installing wall boxes in aerated concrete, installation can be as shown in the figure above.



- 12.
- If the wall cladding will be ceramic tiles, a gasket must be mounted behind the tiles and form a seal with the wall penetration.
  - The wall membrane contractor is responsible providing and fitting a gasket suitable for LK Wall Boxes. **LK Pipe Membrane 48**, (RSK 481 43 86) can be used.
  - If the wall covering is to have vinyl as external surface layer, the membrane contractor is responsible for sealing between the box's neck and the vinyl sheet.



After wall covering

- 13.
- The wall box is cut down to 6-9 mm outside the finished wall with LK Wall Box Cutter UNI (RSK 187 64 94). Aids for correct cutting dimensions can be used, (RSK 188 26 76) LK Distance plate 6-9mm.
  - If the wall cladding is to be vinyl as the waterproof membrane, a LK Wall Box Cutter UNI UTV (RSK 188 21 54) can be used.



## LK CONNECTION COUPLINGS

- For installing mixer taps 160 C/C, LK Connection Coupling M26, (RSK 188 18 45) must be installed.
- The connection is adjusted for length and the thread joint to the connection elbow is sealed with e.g. flax and thread paste.
- Tighten using an adjustable spanner or 14 mm socket spanner.



**NOTE!**  
Plumber's tape must not be used for the connection coupling.



LK Connection Coupling M26.

- For installing mixer taps 150 C/C, LK Connection Coupling G20/G15, (RSK 188 18 48) must be installed.
- The connection coupling must be adjusted for length so that approx. 10 mm of the 3/4" pipe thread is exposed as the cover is tightened against the wall.
- The thread joint to the connection elbow is sealed with e.g. flax and thread paste.
- Tighten using a 14 mm socket spanner.



**NOTE!**  
Plumber's tape must not be used for the connection coupling.



LK Connection Coupling G20/G15.

- For more connection coupling variants, see: [www.lksystems.se/en/products/universal/installation-components/angle-wall-box-mounting/](http://www.lksystems.se/en/products/universal/installation-components/angle-wall-box-mounting/)

## Replacing PE-X pipes with LK Wall Box UNI

When replacing LK PE-X Universal Pipes, see installation instructions for LK PE-X, PAL and PE-RT pipes.

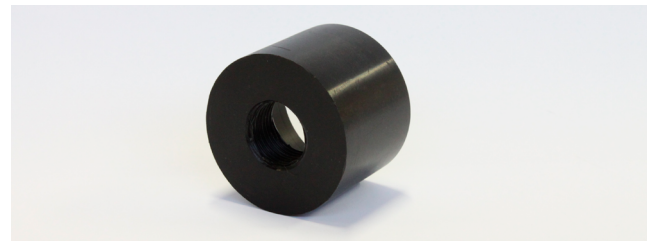
Remove and install the blue plastic nut with LK Tool Wall Box UNI/Grip V2 (RSK 188 26 95).

## ACCESSORIES FOR LK WALL BOX UNI

### Reinforcement sleeve

#### LK Reinforcement sleeve UNI

- (RSK 187 81 78), see the figure below. Use as the mixer tap requires maximum support.
- The sleeve has an internal 1/2" thread that is threaded onto the connection coupling.
- The connection coupling is then threaded onto the wall box's connection elbow.

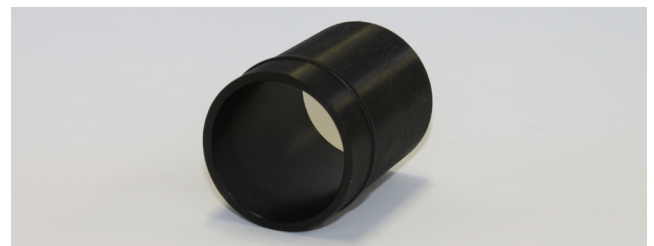


LK Reinforcement sleeve UNI (RSK 187 81 78).

### Extension sleeve

#### LK Extension sleeve UNI

- (RSK 187 81 79) is used for site-cast concrete walls.
- When a LK Wall Box is exposed from a concrete wall, press this extension sleeve into the box.
- When a connection coupling is to be installed using a LK Extension Sleeve UNI, some of LK's connection couplings will need an extension pipe.
- When installing on site-cast concrete structures, LK Embedding Boxes are recommended.



LK Extension Sleeve UNI (RSK 187 81 79) Length 65 m.

