

LK Pipe Fixture Quattro

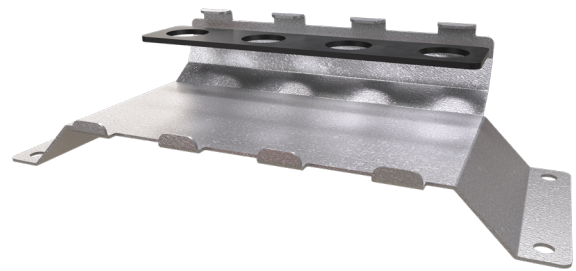
DESIGN

Article No: 188 25 04, 188 26 99

- Pipe fixture for embedding when installing quattro connectors for radiators. There are two models with different c/c measurements between pipes: 40-50-40 c/c and 50-50-50 c/c.
- LK Pipe Fixture Quattros low construction height of 70 mm makes it suitable for use on HDF floor joists for example.
- Attached using two cable strips or label strips per pipe (not included).
- The fixture has 4 x holes for attaching to the surface.



LK Pipe Fixture Quattro with spreader, 40-50-40 c/c.



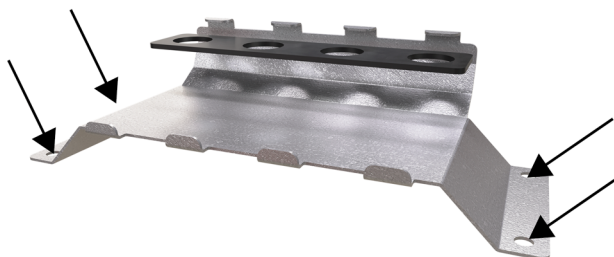
LK Pipe Fixture Quattro with spreader, 50-50-50 c/c.

TABLE OF CONTENTS

Design	1
Installation	2
Dimension drawings	2

INSTALLATION

1. Attach LK Pipe Fixture Quattro where required using the four screw holes or other fastening method using the four holes.

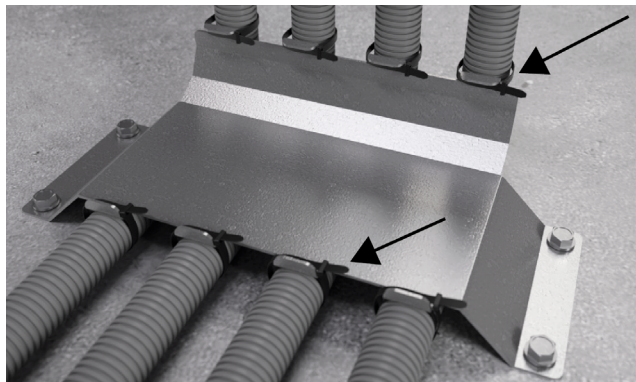


2. Pass the pipe under the LK Pipe Fixture Quattro and secure with cable ties. Use two cable ties for each pipe, one at each end of the LK Pipe Fixture Quattro.



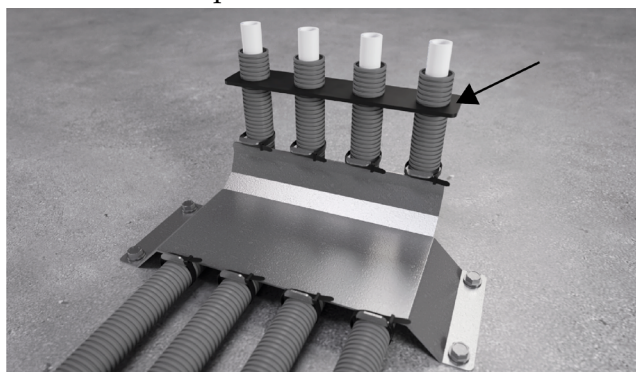
NOTE!

Do not tighten the cable tie so hard that the pipe is deformed.



Installed LK Pipe Fixture Quattro with pipe.

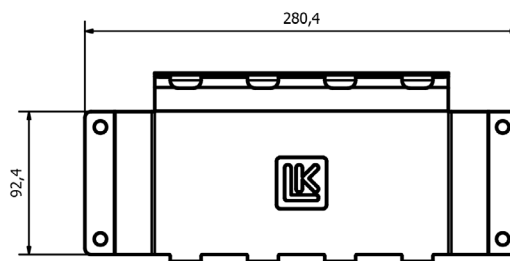
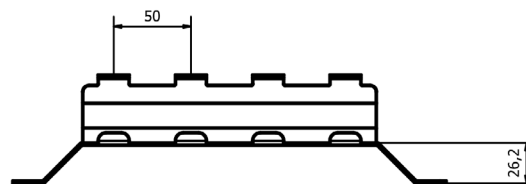
3. Install the spreader.



For more details on the pipe, see Assembly instructions | LK PE-X, PAL and PE-RT pipes. Go to LK's website at www.lksystems.se/sv/teknisk-dokumentation and select the 'Universal och Monteringsanvisning' filter (universal and assembly instructions).

DIMENSION DRAWINGS

LK Pipe Fixture Quattro 50-50-50 c/c.



LK Pipe Fixture Quattro 40-50-40 c/c.

