

# LK Drainage Elbow V2 Complete

LK Drainage Elbow V2 Complete is included in the LK Manifold Cabinet.

## Installing cabinet drainage

Drainage outlets from a cabinet with tap water installation must always drain onto an area with a watertight flooring.

**Exceptions to requirements for leakage indicator location: A prefabricated construction, e.g. a manifold cabinet, or other verified construction placed in a stairwell can have a leakage indicator outlet in the stairwell on a waterproof or water repellent floor. The exception does not apply to a single residential building.**

Drainage outlets from a cabinet with heating system installation may drain from the wall surface beneath the cabinet so the leakage is quickly detected. The cabinet and drainage outlet should be installed in rooms that are normally used every day.

If the pipe penetrates a wall, the distance between the pipe and the adjacent wall or the sealing layer of the floor must be at least 60 mm. A water leakage detector may not be installed in the same installation space as for bathtubs or showers.

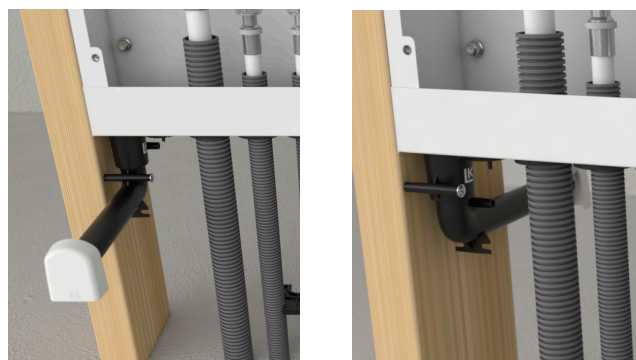
There are several ways to install the drainage elbow:

### A – Drainage elbow connected directly to the cabinet’s outlet pipe

Drainage from the wall surface under the cabinet. Connect the drainage elbow directly to the cabinet’s outlet pipe after all pipe inlets and sealing plugs have been installed.

Fix the drainage elbow to a wall stud in a suitable position. Insert the two installation screws supplied in any of the fixing holes.

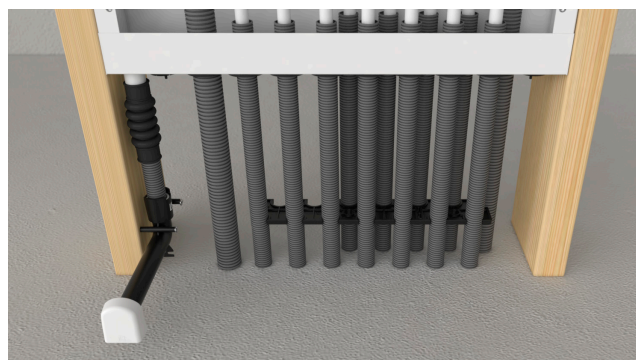
For cabinets mounted externally on the wall, the drainage elbow opens out into the pre-drilled hole in the base.



*A drainage elbow directly connected to the cabinet’s outlet pipe will drain into the same room as the cabinet’s service hatch or, alternatively, the room behind.*

### B - Drainage elbow connected via a conduit.

Connect the conduit to the cabinet’s drainage pipe using the bellow sleeve. The bellow sleeve must not be deformed in a manner that prevents the flow of any water leaks. Connect the drainage elbow to the conduit. Note that the pipe should rest in the drainage elbow at a depth of approximately 20 mm. Fix the drainage elbow to a wall stud in a suitable position. Insert the two installation screws supplied in any of the fixing holes. Ensure that the entire length of the conduit is installed sloping downwards towards the outlet and that the conduit is secured.

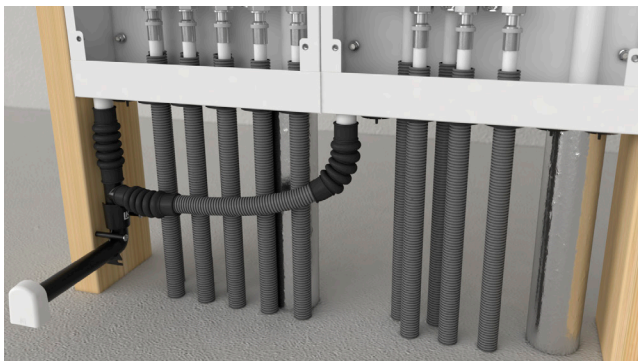


*Drainage elbow connected via a conduit.*



### C – Connection of drainage pipes

It is possible to connect drainage pipes from two cabinets. The illustration below shows side-by-side installation but drainage pipes can also be connected when the cabinets are mounted further apart. Use LK Drainage Kit 25 Duo. Fix the drainage elbow to a wall stud in a suitable position. Insert the two installation screws supplied in any of the fixing holes. Ensure that the entire length of the conduit is installed sloping downwards towards the outlet and that the conduit is secured.



*Connection of drainage pipes*

### D – Installation of outlet plate

Install a wall panel with a hole for the drainage elbow's outlet pipe. Hole diameter approx. 26 mm. Connect any sealing layer as per the instructions of the supplier of the sealing layer. Although LK Systems can supply the LK Pipe Membrane, the sealing contractor should carry out the installation and be responsible for the waterproofing characteristics of the sealing layer in accordance with industry regulations issued by the Swedish Ceramic Tile Council (BBV), Swedish Flooring Trade Association Wet Room Control (GVK) or the Swedish Painting Industry Wet Room Control (MVK).

Once the wall panelling is installed, the drainage elbow should be cut to size using the LK Drainage elbow cutter V2. Alternatively, the drainage elbow can be cut to a suitable length using a tool such as a hacksaw blade. Be careful not to damage the surface layer, leave 2-3 mm of the outlet pipe protruding from the wall. In rooms with walls with a sealing layer leave 6-9 mm of the outlet pipe protruding from the wall.

Install the LK Outlet Plate V2 in the outlet pipe. For a more luxurious finish, the LK Outlet Plate V2 Chrome is available as an accessory.

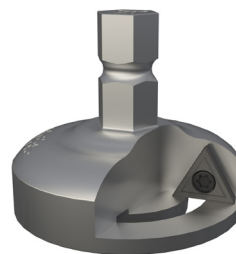


*Installation of the LK Outlet Plate V2.*

### ACCESSORIES



*LK Outlet Plate V2 Chrome, article no. 188 26 14.*



*LK Drainage elbow cutter V2, article no. 188 26 15*

