

LK Wallbox UNI Push V3 AX16 and AX20

Intended for LK PE-X and PAL Universal Pipe with premounted insert.

<https://www.lksystems.se/en/products/lk-universal/products/pipes/pe-x/>

<https://www.lksystems.se/en/products/lk-universal/products/pipes/pal/>

PE-X pipe-in-pipe system, including components according to Installation solutions NT VVS 129, is tested and approved according to NT VVS 129 and Sintef Test Method for conduits. Read more: <https://www.lksystems.se/en/support/documentation/documentation-lk-universal/>

LK Systems recommends that the wall box should be connected with PE-X pipe. Please note that connection with LK PAL Universal Pipe dimensions 16 and 20 and LK PE-X Universal Pipe dimension 20 does not meet the requirements in BBR for hidden positioned / inspectable joint without service hatch.

Pressure class PN10

ASSEMBLY

LK Wallbox UNI Push can, due to its unique design, be assembled on a wall with at least 45 mm studs, both in the back and the front edge of the wall, depending on the method of construction. The wallbox can also be assembled on the side of a stud. Screws for mounting is included.

There are several accessories to get the correct c/c distance between two wall boxes and mounting them in different building materials.

Penetrations in wall with a waterproof layer
There must be no direct pipe penetrations in connection with the bathing or showering area, except for direct connection of tub or shower mixer and shower device.

Wall box must be mounted before the waterproof layer is mounted and be fixed perpendicular to the surface, so that movement cannot occur in the waterproof layer. For pipe penetration into a wall, the distance between the waterproof layer on the adjacent floor or wall and the box must be at least 60 mm and at least 100 mm from the ceiling. The distance between the boxes in the wall for tap water or heating pipes must be at least 60 mm.

TABLE OF CONTENTS



LK Wallbox UNI Push AX16 V3
Article no. 188 26 57
See page 1.



LK Wallbox UNI Push AX20 V3
RSK 188 26 58
See page 2.



LK Wall Support Wallbox UNI Push V3, c/c 160 and 150
Article no. 188 26 60 and 188 26 61
See page 5.



LK Wall Support Flex Wallbox UNI Push
Article no. 188 22 03
See page 6.



LK Wall Support Wallbox UNI Push 150 N5
Article no. 188 22 95
See page 7.



LK Wallbox UNI Push Clamp V3
Article no. 188 26 59
See page 7.



LK Connection couplings
Article no. 188 18 45, 188 18 48
See page 8.



LK Potable Water System is approved according to the Nordtest method NT VVS 129.

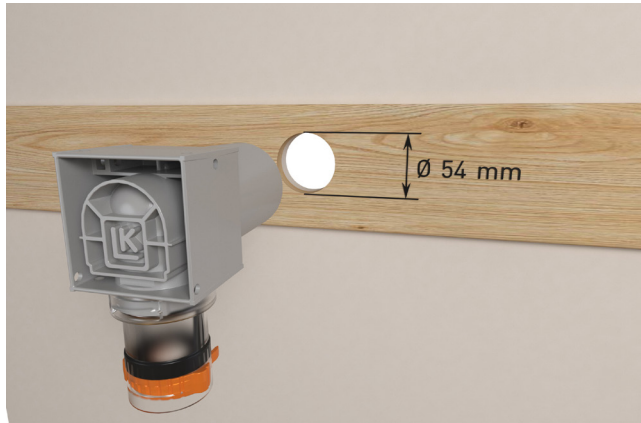


Accepterad monteringsanvisning
2021:1



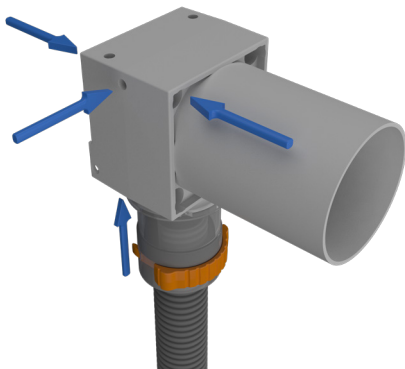
LK Wallbox UNI Push AX V3

1.1. Check that all the parts on the wallbox are whole prior to assembly. If any part is damaged, it must be replaced.



1.2. Drill a hole of diameter 54 mm.

The wallbox can be fastened in many different ways:




When two wall boxes are to be installed on a wooden stud, **LK Wallbox UNI Push Clamp V3** (Article no. 188 26 59) can be used.

1.3. There are two different ways to mount the wallbox on, select 1.3.1 or 1.3.2. Always try to assemble the wallbox so that the shank is as short as possible, this facilitates any replacement of the pipe.

The distance between the boxes in the wall with a waterproof layer for tap water or heating pipes must be at least 60 mm.

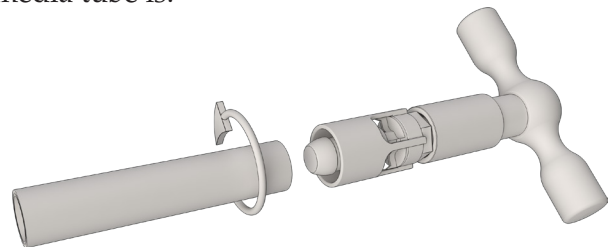
1.3.1 Fasten the wallbox with the supplied screws. The wallbox should always be attached against the nogging piece, stud or Wet-Room-Wall 2012 (Safe Water-wall). When assembling from the front or the back, use the four shorter screws. When assembling at the side of a stud or upwards against a nogging piece, use the two longer screws. Proceed to step 1.4.

1.3.2 Start by mounting LK Universal Pipe according to step 1.4 and follow the installation instructions to step 1.10. Assemble the wallbox from the front or back with the four shorter screws. When assembling at the side of a stud or upwards against a nogging piece, use the two longer screws. The wallbox should always be attached against the nogging piece, stud or Wet-Room-Wall 2012 (Safe Waterwall). Then follow the instructions from point 1.11.



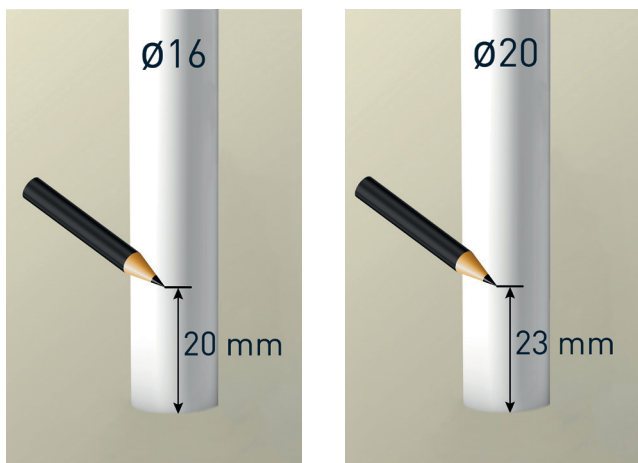
NOTE!
The wallbox may never be attached only in plaster.

1.4. Adjust the length of LK Universal Pipe by cutting it perpendicular with a pipe cutter. Cut the conduit another 30 mm for the 16 mm wall box and about 40 mm for the 20 mm wall box than the media tube is.



1.5. For both LK PE-X and LK PAL Universal Pipes must be deburred inside to prevent damage or displacement of the O-rings, which will inevitably result in a leaking joint. After deburring, the pipes must be cleaned from any shavings.

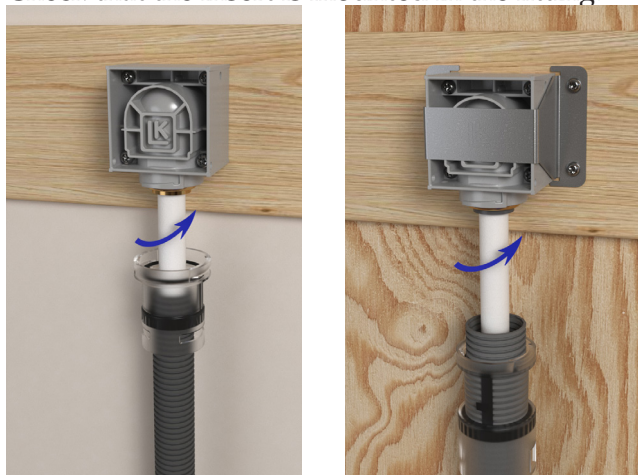




1.6. Mark the insertion depth on the pipe. The insertion depth should be 20 mm on the 16 mm pipe and 23 mm on 20 mm pipe. The yardstick at LK Smart Tool Push AX (RSK 188 25 49) will facilitate it.

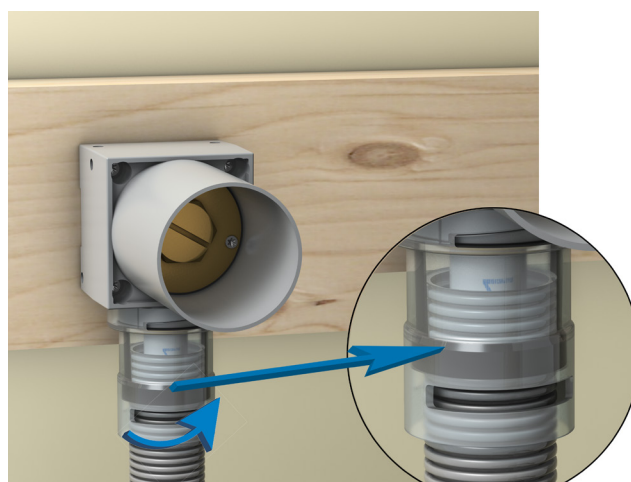
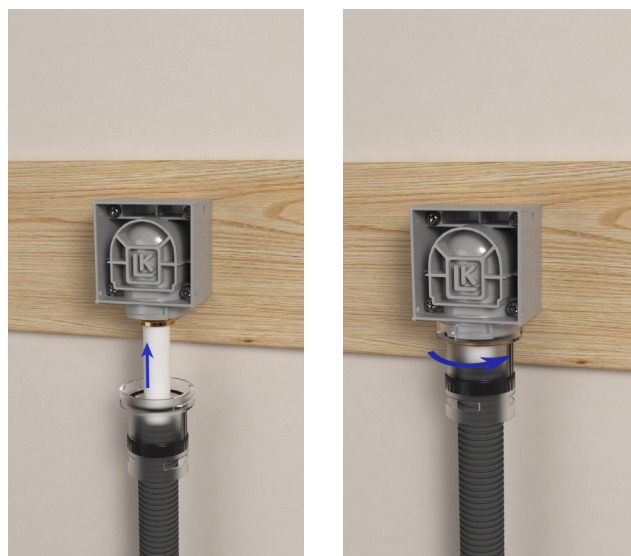
1.7. Loosen the sleeve coupling and pull out the clip on the 16 mm wall box and on the 20 mm wall box it should remain. Then guide the sleeve coupling on the conduit.

Check that the insert is mounted in the fitting.



1.8. LK Universal Pipe is now inserted into the PushFit coupling until it resists and the marking of the insertion depth is barely visible. Then pull the pipe to ensure that it is secured firmly in the coupling.

To facilitate installation of LK Universal Pipe in the fitting, use **LK Manual Pipe Grip Plier 16-32** (Article no. 188 26 97).

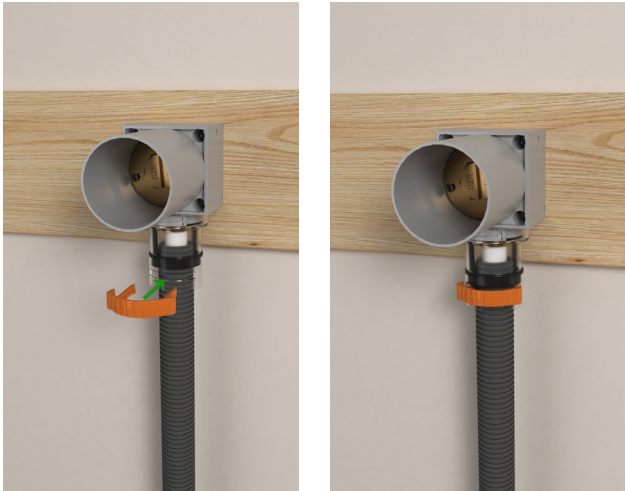


1.9. Assemble the sleeve coupling on the wallbox's casing with a rotating movement until it stops, so that it locks firmly.



NOTE!

Check that at least one groove on the conduit is visible above the rubber gasket in the sleeve coupling, and that the gasket is midway between two grooves on the conduit.



1.10. Install the conduit clip in the 16 mm wall box sleeve coupling. Ensure that the ends go through the slot on the back of the sleeve coupling. Check that the conduit is fixed by pulling on it.




1.11. Secure the conduit pipe close to the wall-box (15-30 cm) and thereafter with at least one fixation every other meter, using **LK Clip Plastic for Sleeve Pipe**. For conduit dimension 25 mm (Article no. 188 07 62) and 34 mm (RSK 188 07 63).

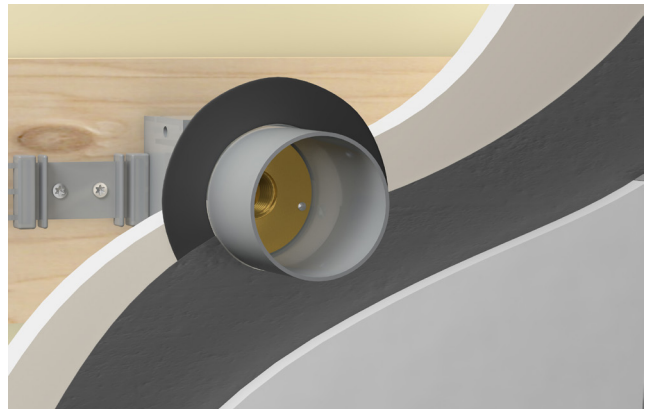
1.12. The pressure testing plug is fitted and may NOT be used for any other purposes besides pressure testing. Remove the plug using a screwdriver or a 25 mm box spanner. The pressure and leakage check must be carried out according to the Assembly instructions for LK PE-X, PAL and PE-RT pipes.



1.13. In cases where the wall box is connected with LK PAL Universal Pipe dimensions 16 and 20 and LK PE-X Universal Pipe dimension 20, the wall box must be screwed from the back side in a beam so that it can be dismantled. A service hatch should be mounted behind the box so that dismantling of the wall box is possible.



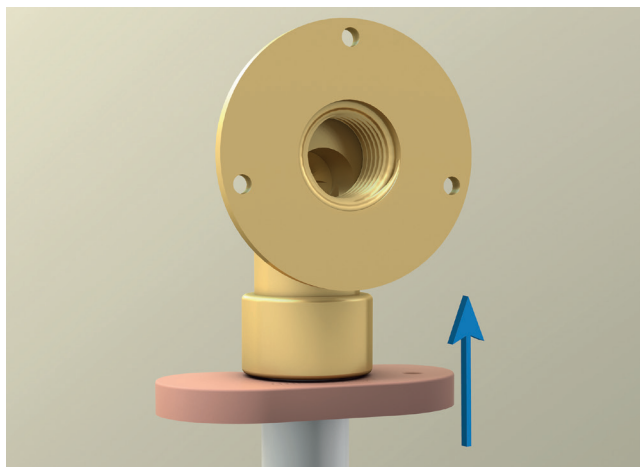
NOTE!
Please note that LK PAL Universal Pipe dimensions 16 and 20 and LK PE-X Universal Pipe dimension 20 are not exchangeable. This means that a hatch for service is necessary to be installed.



1.14. If the wall cladding is of ceramic tiles, the pipe membrane should be assembled behind the tiles and connected tightly against the wall lead-through. **LK Pipe Membrane Wallbox Push**, (Article no. 481 44 23) can be used. The sealing layer contractor is responsible for the sealing layer's adhesive properties in accordance with the industry rules. BBV 21:1 och GVK 2021:1. If the wall cladding is of vinyl covering the sealing layer contractor should be responsible for sealing between the wallbox's shank and vinyl covering.



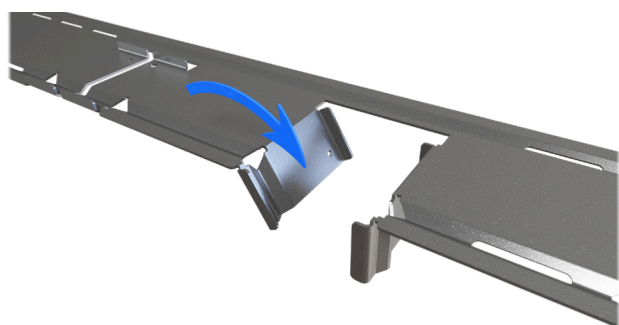
Disassembling the PushFit coupling



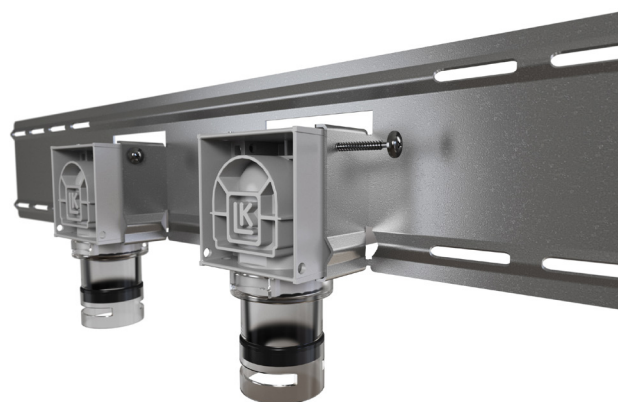
In the event of disassembly, **LK Disassembly Tool** (Article no. 188 06 45 for 16 mm) or 188 06 46 for 20 mm) or **LK SmartTool AX** (Article no. 188 25 49) must be used. If the same pipe needs to be reassembled, the pipe ends should be checked so that the coupling's grab ring has not damaged the pipe. In this case, the pipe should be cut at least at the insertion depth which has been marked. Check the o-rings on the support sleeve so that they are intact before reassembling the coupling, otherwise the coupling must be replaced. The coupling can be reused a maximum of 10 times.

LK Wall Support for Wallbox UNI Push

When two wall boxes are to be mounted in a stud construction, **LK Wall Support Wallbox UNI Push V3, 160** (Article no. 188 26 60) or **LK Wall Support Wallbox UNI Push V3 150** (Article no. 188 26 61), can be used. LK Wall Support attaches the boxes and provides the correct c/c distance between them. LK Wall Support UNI Push V3 is suitable for stud separation dimensions of 300 mm or 450 mm.



2.1. Bend out the attachment lugs on the plate.



2.2. Mount the wall boxes on the plate using the screw included as in the picture above. Pass the screw through the large hole in the plate and through the box so that it tightens in the small hole.



2.3. The stud must be jacked out 5 mm behind the whole plate to provide space for the plate reinforcement profile.

2.4. Attach the plate to the stud using four screws, (not included).

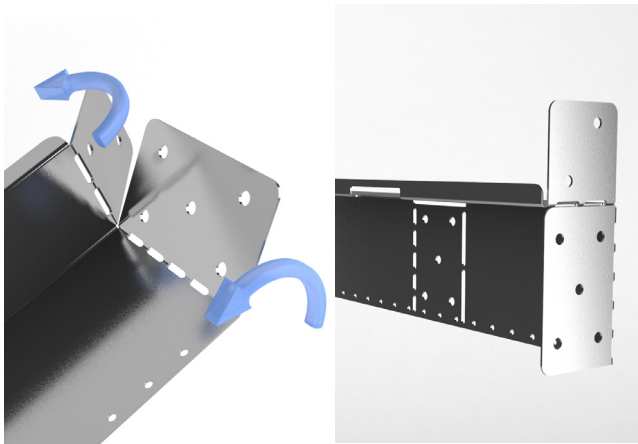
2.5. Continue to mount the box according to step 1.4.



LK Wall Support Flex Wallbox UNI Push

When two wallboxes are to be installed on a wooden stud, then a **LK Wall Support Flex Wallbox UNI Push** (Article no. 188 22 03) can be used. LK Wall Support fixes the wallboxes and provides a flexible c/c distance between them. LK Wall Support Flex UNI Push has been adapted for a distance of 300 mm, 450 mm or 600 mm between the studs.

3.1. Cut the wall support to the required length, see instructions in the table below.



3.2. Fold the upper mounting ear and turn in the lower mounting ear, see instructions in the table below.

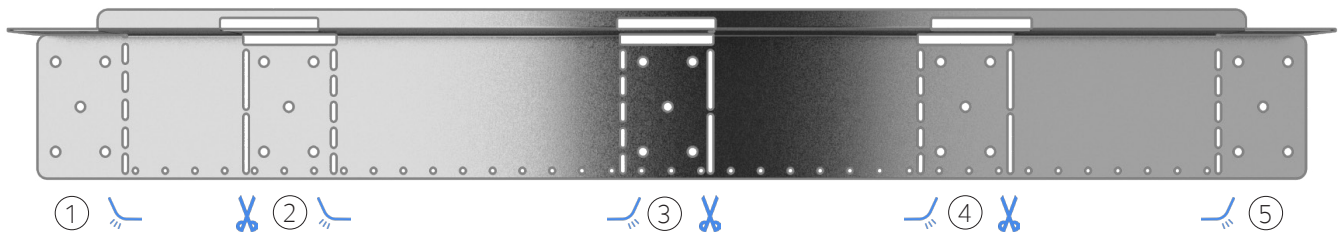
Instructions	Refers to c/c dimensions (mm)
1 + 5	600 Wooden stud
1 + 4	450 Wooden stud
2 + 5	450 Steel stud
1 + 3	300 Wooden stud






3.3. Attach the plate to the side of the stud using at least two screws in the lower mounting ear and a least one screw in the upper mounting ear (not included).

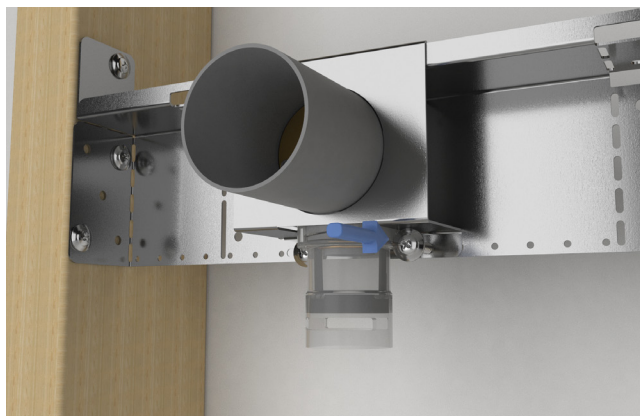


3.4. Mount the box in the bracket and hook this onto the plate. Adjust the c/c distance between the boxes.
The distance between the boxes in the wall with a waterproof layer for tap water or heating pipes must be at least 60 mm.



-  = Cutting instructions
-  = Folding instructions right
-  = Folding instructions left





3.5. Attach the bracket to the plate with the screws included.

3.6. Continue installing the box according to step 1.4.

LK Wall Support Wallbox UNI Push 150 N5

When two wallboxes are to be installed in a wooden stud framing, LK Wall Support Wallbox UNI Push 150 N5 (Article no. 188 22 95) can be used. The wall support is for mixers with c/c 150 mm and is suitable for walls that have maximum 600 mm distance between the studs.



NOTE!

It is c/c 75 mm between the holes on the wall support, but there are no collars for this assembly. The distance between the boxes in the wall with a waterproof layer for tap water or heating pipes must be at least 60 mm.



4.1. Attach each wallbox to the plate with four of the included system screws as shown above.

4.2. The stud must be jacked out 8 mm deep on top edge to provide space for the plate reinforcement edge.



4.3. Attach the plate to the stud using the four countersunk wood screws included.

4.4. Continue to mount the wallbox according to step 1.4.

LK Wallbox UNI Push Clamp V3

When the wallbox is to be installed from the back then it is easier to use **LK Wallbox UNI Push V3 Clamp** (Article no. 188 26 59). The clamp means the screw is attached at a slight distance from the wallbox.



5.1. Mount the wallbox in the hole (Ø 54 mm), mount the clamp. Attach the clamp and the wallbox using four screws (not included). The distance between the boxes in the wall with a waterproof layer for tap water or heating pipes must be at least 60 mm.

After wall covering



6.1. The wall box is cut down to 6-9 mm from the completed wall with **LK Wall Box Cutter UNI** (Article no. 187 64 94). Aids for correct cutting dimensions can be used, (RSK 188 26 76)


LK Distance plate 6-9mm.

If the wall cladding is to have a vinyl covering then the **LK Wall Box Cutter UNI UTV** (Article no. 188 21 54) can be used.

LK CONNECTION COUPLINGS




7.1.1 For assembly of tap mixer in accordance with Swedish standards, **LK Connection coupling M26** (Article no. 188 18 45) should be assembled. The length of the connection should be adjusted and the thread joint against the angle fitting should be sealed with, for example, flax and thread paste. Tightening is done with a combination wrench or a 14 mm Allen key.



NOTE!
Thread tape should not be used on the connection coupling.



7.1.2 For assembly of tap mixer in accordance with international standards, **LK Connection coupling 3/4"/1/2"** (Article no. 188 18 48) should be assembled. The length of the connection coupling should be adjusted so that approximately 10 mm of the 3/4" pipe thread is exposed when the cover plate is tightened against the wall. The thread joint against the angle fitting should be sealed with, for example, flax and thread paste. Thread tape should not be used. Tightening is done with a 14 mm Allen key.



NOTE!
Thread tape should not be used on the connection coupling.

For more variants of connection couplings, visit: <https://www.lksystems.se/en/products/lk-universal/products/installation-components/angle-wall-box-mounting/connection-couplings/>

Replacement of PE-X pipe to LK Wallbox Push

For replacement of LK PE-X Universal Pipe X, refer to assembly instructions for LK PEX, PAL and PE-RT.

ACCESSORIES FOR LK WALLBOX UNI PUSH Reinforcement for Wallbox

LK Reinforcement for Wallbox UNI (Article no. 188 10 66), see picture below, is used when the mixer needs maximum support. The reinforcement has a female 1/2" thread which is screwed onto a connection coupling. The connection coupling is then threaded on the wallbox angle fitting.

