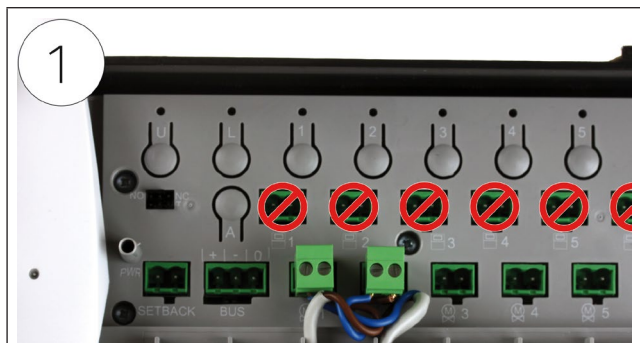


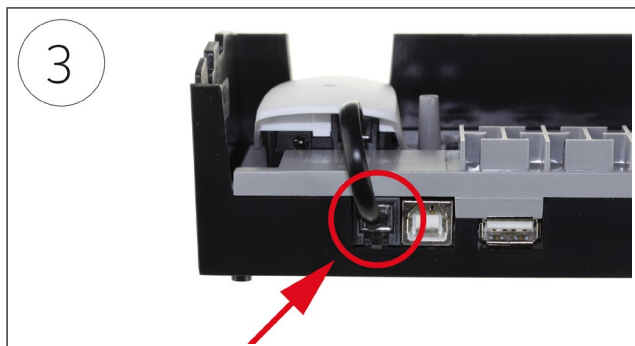
Quick Guide - Programming wireless thermostat



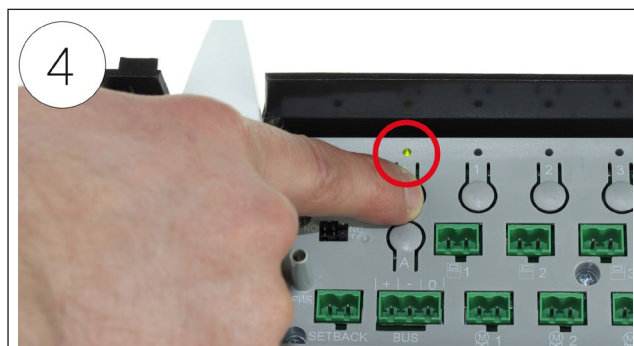
1
Connect the actuators to the bottom row of terminal plugs marked 1 ... 8. Note! Not in the row marked 1 ... 8.



2
Plug in the receiver unit.



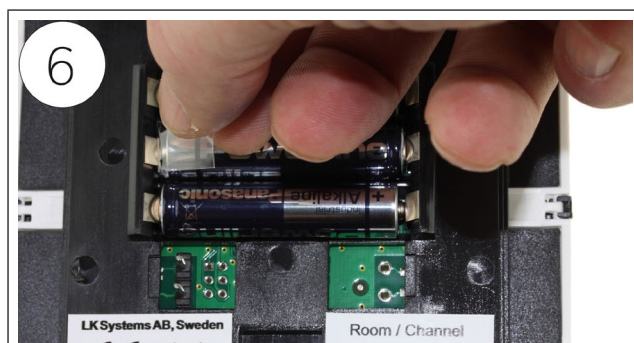
3
Make sure that the radio link is connected to the receiver unit.



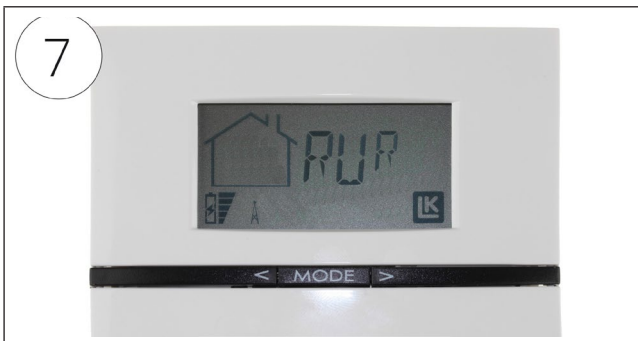
4
Press the L-key for at least three seconds until L-LED lights up green.



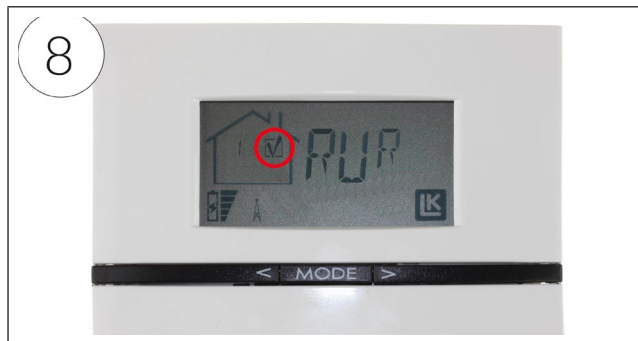
5
Remove the back of the thermostat by pressing the locking with a screwdriver or similar.



6
Remove the plastic from the battery of the thermostat.



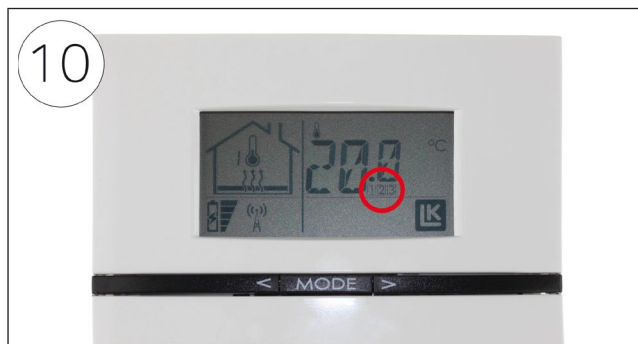
The thermostat shows *RUR*.



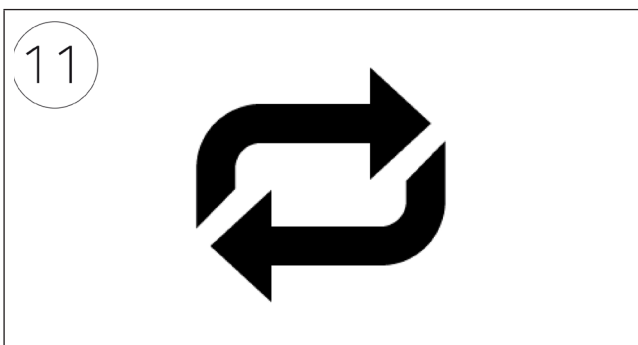
Press *Mode* on the thermostat until the "checkmark" is shown in the display.



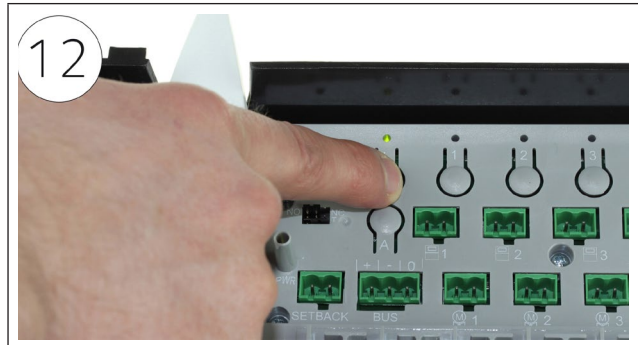
The receiver unit's L-LED switches to yellow and selectable channels light up green. Select channel by pressing desired channel key. The selected channel flashes green.



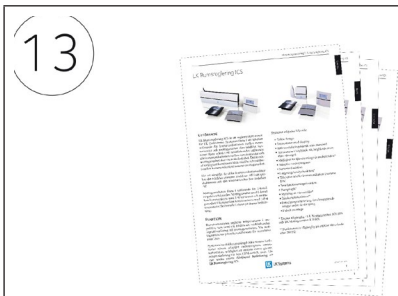
Check that the selected channels are shown in the display. Confirm with *Mode*. The thermostat switches to normal view.



Repeat steps 5-10 for the other thermostats in the facility.



Complete the programming by pressing the L-key where-upon the L-LED goes out.



The programming of the thermostats is now completed. For a more detailed assembly instruction, see supplied instructions or www.lksystems.se.