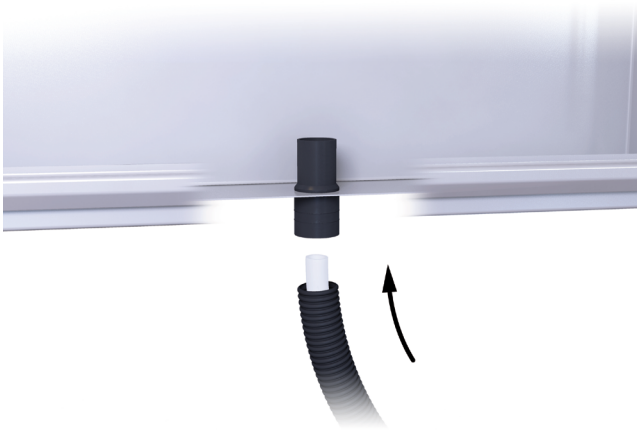


LK Pipe Inlet 32 PiP LP



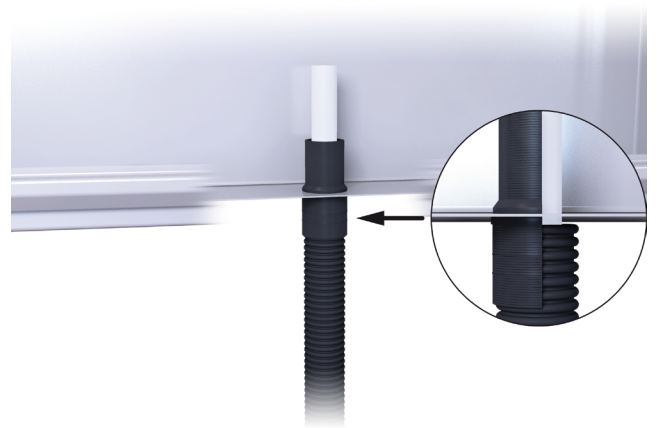
- Fit the LK rubber pipe inlet LP to the 40 mm hole in the LK Cabinet.
- Insert the Pipe-in-Pipe (conduit Ø 40-44 mm) in to the rubber pipe inlet.



- Push the inner pipe up in to the cabinet with sufficient length. (The outer conduit stays under the cabinet but inside the rubber sealing.)



Article no. 188 27 24



- Check that the outer conduit is properly bottomed out.



- Slide the LK Umbrella LP seal over the inner pipe and down over the rubber inlet.