

LK Radiator Bend Support & LK Pipe Sleeve

DESCRIPTION

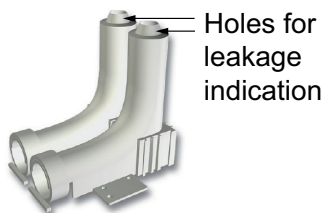
LK Universal pipes offer many advantages for connections to radiators. For floor connections there are several alternatives. Installations with LK Radiator Bend Support or using PE-X-pipes with heat formed radii are described below.

LK RADIATOR BEND SUPPORT

- Designed for LK PE-X Universal Pipe 16 in 25 mm conduit.
- Height: 120 mm

LK Radiator Bend Support is used to support pipe at floor openings. They can be secured to the floor using the flanges integral to the radiator bend support.

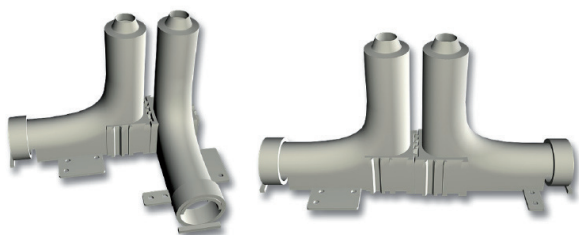
LK Radiator Bend Support is delivered in pairs with integrated slide-locks for joining them; giving a c/c-distance between the pipes of 40 mm. Spacer slide-locks are included for c/c distances of 45 and 50 mm.



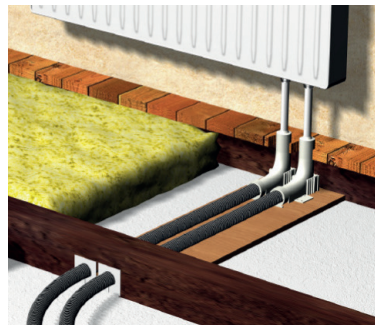
ASSEMBLY

LK Radiator Bend Support can be joined for pipe connection from different directions (see illustration below).

To avoid accidental leakage in the building fabric, the supplied O-ring is inserted in the 5th corrugation of the sleeve and pushed up into the radiator bend support.



When installing LK Radiator Bend Support the radiator bend must be fixed and end above the floor's surface (see illustration).



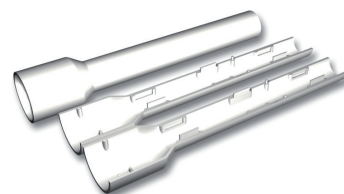
LK PIPE SLEEVE

LK Pipe Sleeve is used as protection for the visible parts of the PE-X-pipe, between the floor and radiator. The pipe sleeve consists of a white PE-pipe which is slit in the longitudinal direction. The pipe sleeve is adjusted lengthwise using pipe shear and then slipped over the PE-X-pipe.



LK COMBI PIPE SLEEVE

LK Combi Pipe Sleeve is used to protect the visible parts of the PE-X-pipe, between the floor and radiator. The pipe sleeve, made of white PE, is in two parts which, after trimming to length, are snapped together over the PE-X-pipe.



ORDER INFORMATION

LK Radiator Bend Support
Article no. 481 43 67
LK Pipe sleeve
Article no. 481 43 50
LK Combi Pipe Sleeve
Article no. 481 43 68