

LK Wall Box AX16

SCOPE

The box is designed for LK PE-X and PAL Universal pipes, only, www.lksystems.se/en/products/universal/.

- The LK PE-X Pipe-in-Pipe system, with component parts as stated in Installation solutions NT VVS 129, is tested and approved in accordance with NT VVS 129 and the Sintef Test method for protective conduits. Read more at: www.lksystems.se/en (technical documentation and use the filters to choose Universal and Assembly Instructions).
- LK Systems recommends that the box be connected with PE-X pipes. Please note that connection with LK PAL Universal pipe dimension 16 does not meet requirements in BBR (Boverket) for a hidden/inspectable joint without a service hatch.
- Pressure class PN 10.
- LK Wall Box AX 16 is available in two designs, single and double. The wall box is designed for prefabricated or cast-in-situ concrete walls. The double box leads pipes out of the wall with variable c/c distance from 150-160 mm.
- LK also has a wide range of connection couplings that can be mounted in the box.

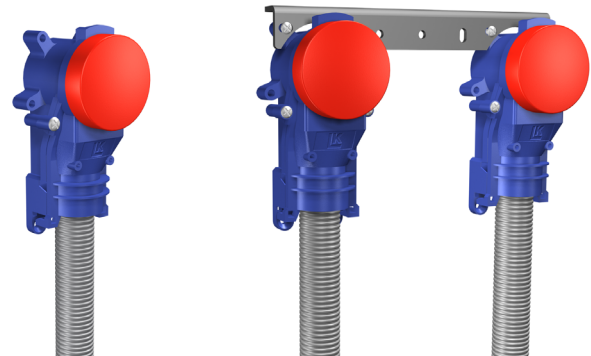
Penetrations in walls with a waterproof layer here must be no direct pipe penetrations in connection with the bathing or showering area, except for direct connection of tub or shower mixer and shower device.



NOTE!

Wall boxes **must be mounted before** the waterproof layer is mounted and **be fixed perpendicular to the surface**, so that movement cannot occur in the waterproof layer.

- For pipe penetration into a wall, the distance between the waterproof layer on the adjacent floor or wall and the box must be at least 60 mm and at least 100 mm from the ceiling.
- The distance between the boxes for tap water or heating pipes, must be at least 60 mm.



Wall Box AX16 Single.

Wall Box AX16 Double.

LK Wall Box AX16 Single.

Article no. 188 06 68

NRF 505 11 92

For PE-X & PAL pipes: AX16

Dy conduit: 25 mm

LK Wall Box AX16 Double

Article no. 188 06 67

NRF 505 11 91

For PE-X & PAL pipes: AX16

c/c: 150-160 mm

Dy conduit: 25 mm



Accepterad
monteringsanvisning
2021:1



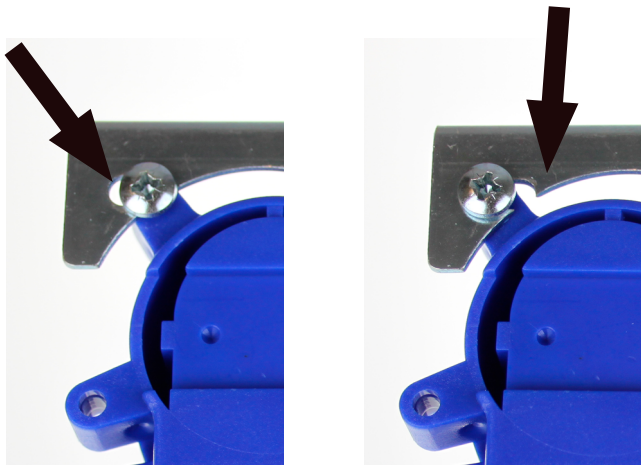
LK Tappvattensystem är godkänt enligt Nordtestmetoden NT VVS 129.

TABLE OF CONTENTS

Scope	1
Assembly	2
Assembly with bracket in mould	3
Assembly with LK Mounting tool, concrete in mould	3
LK Compression fittings	6
Accessories for LK Wall Box	6
Dimension drawing	7

ASSEMBLY

NOTE!
 LK Wall Box double is provided with design c/c 150 mm. The boxes can easily be changed to c/c 160 mm by loosening the 4 screws and **sliding both wall boxes sideways to their extended positions on the rail.**



Box c/c 150 mm

Box c/c 160 mm



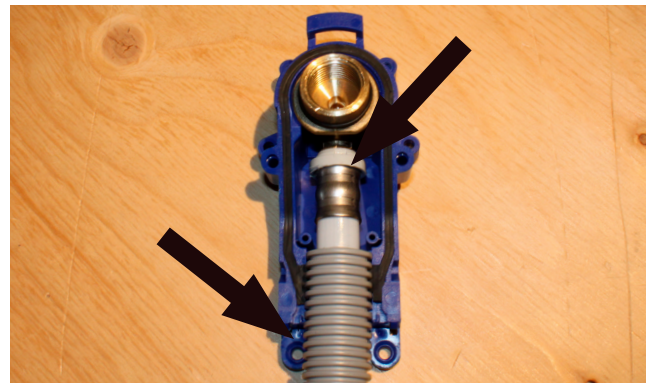
The following parts are included in the kit. Wall Box AX16 Single.

Mount the universal pipe into the LK Wall Box



TIP!
 Follow the instructions in the **Assembly instructions for LK PressPex and PressPex ECO.**

1. LK Universal Pipe is adjusted for length, the conduit is cut 32 mm shorter than the pipe. The pipe must be graded/calibrated and the PressPex connection elbow fitted. Follow the **assembly instructions for LK PressPex.**



2. The conduit is mounted in the two lock grooves and against the seal in the wall box together with the pressed coupling.



3. Then snap on the front of the box.

NOTE!
 If any of the fasteners break during assembly, the wall box must be replaced with a new one.



TIP!
 If you are unable to snap on the front of the box using manual power, you can press carefully with a pair of pliers.

NOTE!
 A pressure and tightness control must be carried out according to the Installation instructions for LK PE-X, PAL and PE-RT pipes.



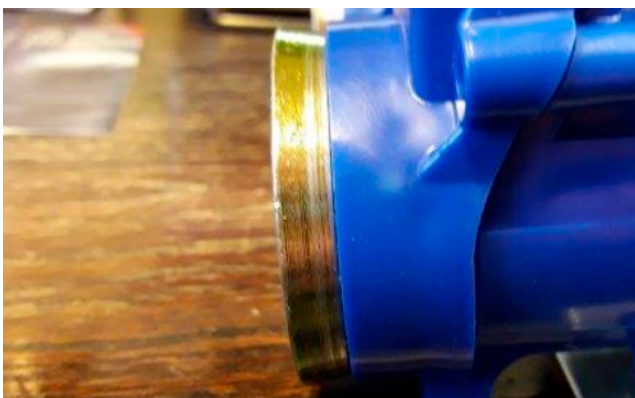


4. Screw the two included screws into the front part of the wall box.

NOTE!
 If the wall box is to be attached to a steel form, contact P-form <https://p-form.se>
 P-form's product is adapted for the wall box.
 The product is called Holding magnet 54/48 for LK UNI box (Art. No. 97-54-12-LK-UNI).



Holding magnet 54/48 for LK UNI Box.



Install the box with the pipe in the wall



NOTE!

The distance between the boxes in a wall with a sealing layer for tap water or heating pipes must be at least 60 mm.

There are two different ways of installing the single box. Either by nailing it to the mould with the supplied bracket, see instruction 5a, or by using the accessory **LK Mounting Fixture concrete** (RSK 188 23 28), see instruction 5b.

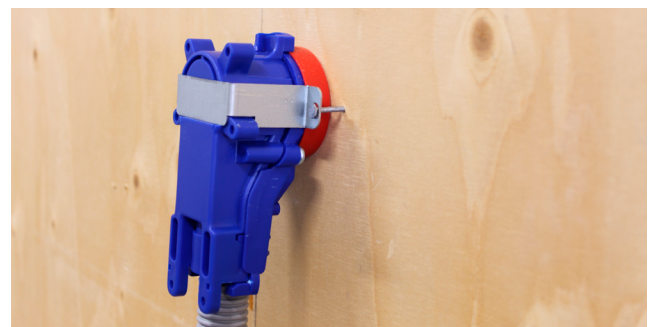
5a. Assembly with bracket in mould, step 1-2



1. Fit the protective cover (red plastic) to prevent the concrete from leaking in.



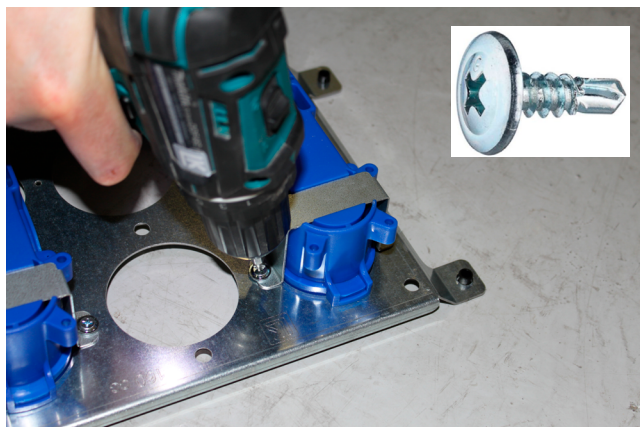
2. Use suitable nails to nail the box to the mould with the supplied plate bracket.



Single box mounted.



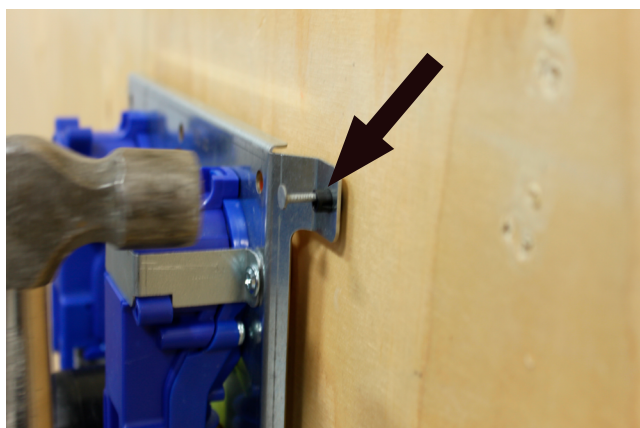
5b. Assembly with LK Mounting fixture, concrete in mould, step 1-6



1. The plate has holes to install the boxes with 150 or 160 mm c/c distance. Turn the plate as desired, see marking on plate. Attach each box with the supplied bracket and two screws.



2. Fit the protective cover (red plastic) on both boxes, to prevent concrete from leaking in.



3. Use suitable nails to nail the plate to the mould.



4. A 50 mm drainpipe can also be attached to the plate's pre-punched hole with M8 threaded rod, two M8 flange nuts and clips

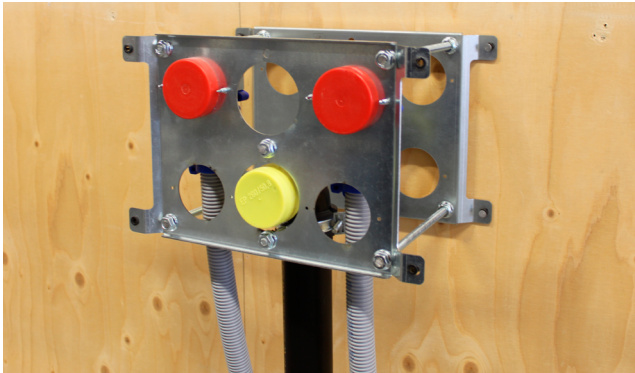
! **TIP!**
In case a pipe outlet is requested in the opposite mould wall, a second plate may be fitted.



5. The plate has holes for five M8 threaded rods that are cut to the right length (cannot be longer than the nut as they will be cast in the concrete).

They are fitted with an M8 flange nut on each side of the plate. Use suitable nails to nail the plate to the mould.





6. Install the plate with the boxes in accordance with 5b steps 1-2, and then attach the plate to the threaded rods with a flange nut on each side of the plate.



9. Install the blue extension neck with the broad edge inwards by screwing in the blue plastic nut. This must be done with **LK Tool Wall Box UNI/Grip V2** (RSK 188 26 95).



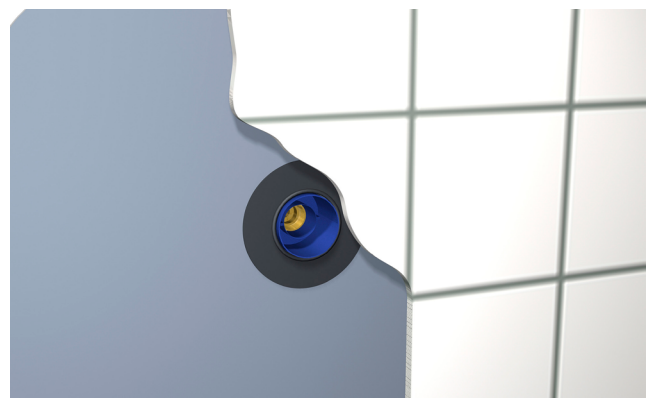
7. In cases where the box is connected with LK PAL Universal pipe dimension 16, the double box must be mounted under a rule where the mounting rail is screwed up into the rule from below. The same applies to single doses, but then must LK wall box bracket can be used, (RSK 187 73 99). A service hatch must be fitted behind the box so that disassembly of the box is possible.



Extension neck fitted.



8. When the wall is cast and the mould removed, the red protective cover may be cut off.



10. If the wall covering is to be ceramic tiles, a pipe membrane must be installed behind the plates and fitted tightly to the wall conduit. The membrane contractor is responsible that the membrane's adhesive properties comply with the BBV industry standard.

If the wall covering is to have a plastic mat as external surface layer, the membrane contractor is responsible for sealing between the box's neck and the plastic mat.



After wall covering



- The wall box is milled down to approximately 7 mm outside the finished wall with **LK Wall Box Cutter UNI** (RSK 187 64 94) and **LK Distance Plate 6-9 mm** (RSK 188 26 76). If a plastic mat is to be used as a surface layer, **LK Wall box cutter UNI** (RSK 188 21 54) can be used with advantage.

LK COMPRESSION FITTINGS



NOTE!

Sealing tape must not be used for the compression fitting.



For assembly of mixer **160 C/C**, LK Connection coupling M26 straight, should be used (RSK 188 18 45). The length of the connection is adjusted and the threaded joint against the angle connection is sealed with e.g. flax and thread paste. Tightening is done with a combination wrench or 14 mm Allen key.



For assembly of mixer **150 C/C**, LK Connection coupling G20 external/G15 internal straight, should be used (RSK 188 18 48). The connection coupling must be adjusted in length so that approx. 10 mm of the 3/4" pipe thread is exposed

when the cover plate is tightened against the wall. The threaded joint against the angle coupling is sealed with e.g. flax and thread paste. Tightening is done with a 14 mm Allen key.

For other types of compression fittings, see: www.lksystems.se/en (Products/Universal/Installation components)

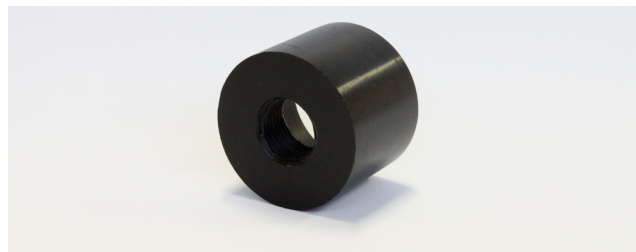
Replacement of PE-X pipe for LK Wall Box

For replacement of LK PE-X Universal pipes, see the *Installation instructions for LK PE-X, PAL and PE-RT pipes*. Remove and install the blue plastic nut with LK Tool Wall Box UNI/Grip V2 (RSK 188 26 95).

ACCESSORIES FOR LK WALL BOX

Reinforcement sleeve

LK Reinforcement sleeve UNI (RSK 188 10 67) is used when the mixer requires maximum support. The sleeve has an internal 1/2" thread that is threaded onto the compression fitting. The compression fitting is then threaded onto the wall box's connection elbow.



LK Reinforcement for Wallbox UNI

Dimensions for casting

See Dimension Drawings.



DIMENSION DRAWINGS

