

# LK Fitting Cabinet VUK

## DESIGN

- LK Fitting Cabinet VUK is delivered complete with a hatch. See page 4 for product data and assembly details included in delivery.
- Fitting Cabinet VUK is designed for safe installation of taps and faucets in outdoor locations.
- The fitting cabinet can be installed in an outer wall, or in an inner wall that opens onto an outer wall. In cases where the cabinet is installed in an external wall, it must be mounted on the warm side of the construction, inside the airtight foil.
- Ensure that adequate insulation is between the outer wall and the fitting cabinet to protect from frost.



LK Fitting Cabinet VUK.

Connection of **LK Universal Pipe (Pipe-in-Pipe)** is usually made through one of the holes in the bottom of the cabinet. If leakage occurs, water will run between the pipe and the conduit to the main manifold which should be located in areas with floor drains, waterproof flooring or housed in manifold cabinet with leakage indication



**NOTE!**

The bottom edge of fitting cabinet VUK should be mounted minimum 200 mm higher than the bottom edge of manifold cabinet UNI.

Connection is also possible through the “knock-out holes” in the side and top of the cabinet. In these cases, drainage (conduit) must be connected in the bottom of the cabinet and lead to an area with floor drain or waterproof flooring.

## PARTS SUPPLIED WITH THE CABINET

### Component parts included in LK Fitting Cabinet VUK:

- Two blue plastic splashguards
- Assembly instructions
- Bag of accessories:
  - Four wooden screws for fixing the cabinet in stud walling
  - Two black rubber plugs
  - Two LK Pipe inlet 20-25 LP
  - Two screws with washers for assembly of the hatch.



**Accepterad**  
monteringsanvisning  
2021:1



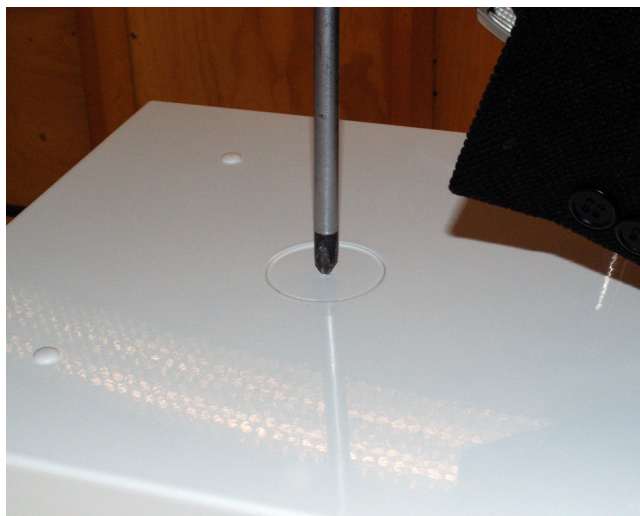
LK Tappvattensystem är godkänt enligt Nordtestmetoden NT VVS 129.

## TABLE OF CONTENTS

Design	1
Parts supplied with the cabinet	1
Installation instructions - Workflow	2
Product data	4
Dimension drawing	5



## ASSEMBLY INSTRUCTIONS- WORKFLOW

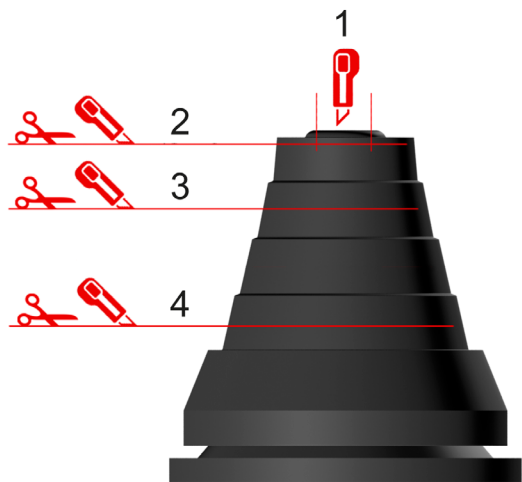


1. Select and remove the required number of "knockout holes" ("The Knockout holes" in the bottom of the cabinet are already removed.)
2. Trim the (2 pcs supplied) LK Pipe Inlet 20-25 LP to the pipe diameter required.



**NOTE!**

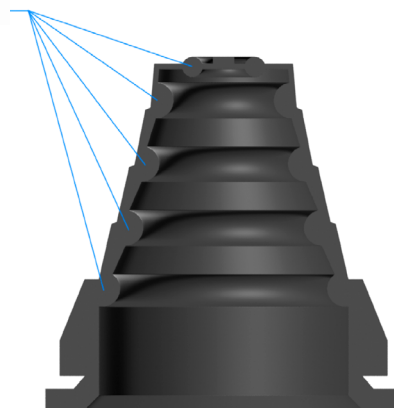
If the seal is damaged while being cut, it must be replaced with a new one.



*Cutting of a LK Pipe Inlet 20-25 LP.*

Cutting level	Dim. Pipes	Dim. Conduit (PIP)
1	Ø12	–
2	Ø16-20	–
3	Ø25	Ø25
4	Ø32	Ø34

### Seal



*A cross-section of the LK Pipe inlet LP 20-25 shows the position of the pipe seal.*



*Cutting of a LK Pipe Inlet 20-25 LP.*

### Pressure and tightness check

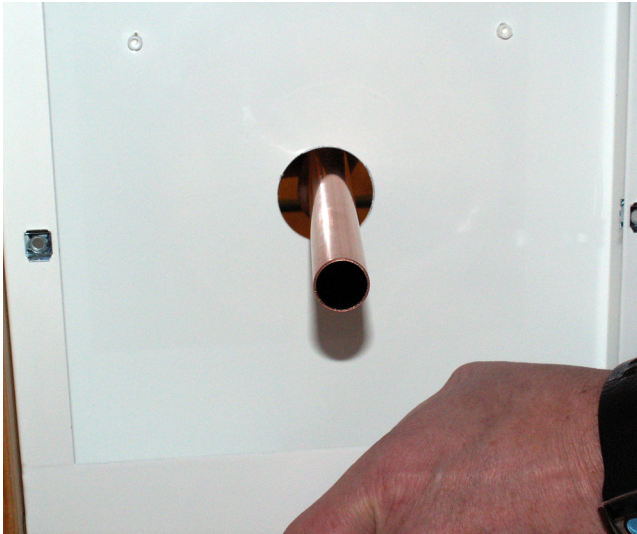
Pressure and tightness check must be carried out in accordance with "Assembly instructions for LK PE-X, PAL and PE-RT pipes" or according to industry regulations on "Safe water installation".



**NOTE!**

A pressure and tightness check should be carried out before the wall covering is to be installed.





3. Place the VUK Cabinet over the copper pipe of the outdoor tap/faucet supply.




6. Assemble the outdoor tap/faucet's angle coupling on the pipe according to the manufacturer's instructions.



4. Trim the length of the pipe and assemble the LK Pipe Inlet 20-25 LP over it.
5. Fasten the cabinet, with the front on the same level as the interior wall, on load bearing joists or anogging piece using the four enclosed screws.



7. Mount the LK Pipe Inlet 20-25 LP correctly in the cabinet. Insert the conduit pipe into the pipe inlet. Insert the LK Universal pipe through the conduit pipe. The conduit pipe should be placed low enough for eventual leakage water to be drained from the cabinet.



**NOTE!**  
Don't forget to use the washers for the screws.





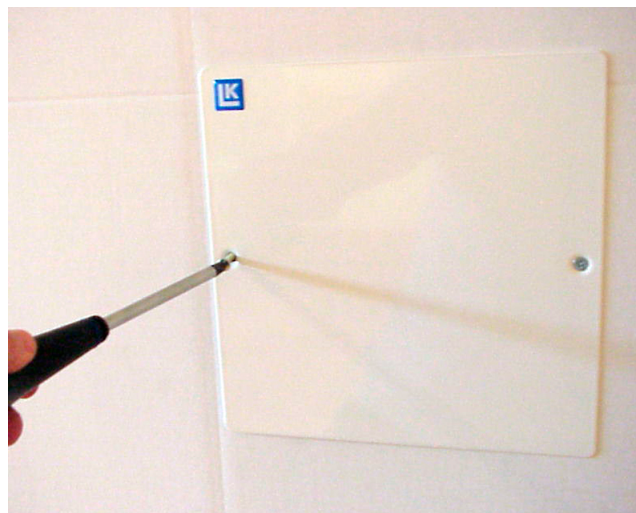
8. Connect the LK Universal Pipe to the angle coupling using LK PI Tube Adaptor AX16, Article no. 481 43 73.



10. . Cut the plaster board to overlap the cabinet by a few millimetres. .



9. Assemble the splashguard.



11. Fix the hatch to the finished/completed wall.

### PRODUCT DATA

<b>Art.no.</b>	187 64 98
<b>Dimensions, cabinet:</b>	250 x 250 x 70 mm
<b>Dimensions, hatch:</b>	280 x 280 mm
<b>Weight:</b>	2,2 kg
<b>Colour code:</b>	RAL 9016



## DIMENSION DRAWINGS

